

Outdoor Safety

**REMEMBER TO
BE SAFE**



Grass Cutting

- > Discharge Away From Roads & Cars
- > Raise Deck Of Mower To Minimize Throwing Objects
- > Properly Guarded Discharge
- > Wear Highly Visible Clothing & Be Cautious Near Right-Of-Ways



**MISSISSIPPI MUNICIPAL
SERVICE COMPANY**

600 East Amite Street, Suite 200
Jackson, MS 39201

Phone: 601-355-8581
Toll Free: 800-898-1032

Fax: 601-355-8584
www.msmsc.com

Heat Stress

Cool Water

- ☉ Every 15-20 Minutes

Rest Breaks

- ☉ Shaded Areas
- ☉ Air Movement

Clothing

- ☉ Light-Colored, Loose Fitting
- ☉ Light-Weight, Breathable Fabric
- ☉ Hat
- ☉ Avoid Sunburn



Heavy Work

- ☉ Cooler Part of Day
- ☉ Rotate Workers

Emergency Plan

- ☉ Phone Numbers
- ☉ Jobsite Address



Gas Trimmer/Weedeater

Personal Protective Equipment

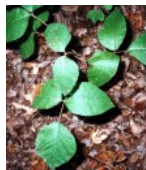
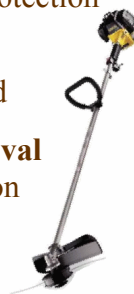
Earplugs – Hearing Protection
Safety Glasses – Eye Protection

Trimming Height - 2"-3"

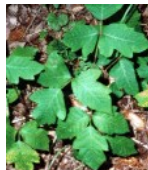
Avoid Touching Ground

“Hands-On” Weed Removal

Avoid Poison Ivy, Poison Oak, & Poison Sumac



Poison Ivy
• 3-Leaflets
• Bigger Center Leaf
• Stand-Alone Bush or Vine



Poison Oak
• 3-Leaflets
• Oak-Shaped Leaf
• Bush In Sandy Soil



Poison Sumac
• 13-Leaflets
• Grows in Standing Water



Bees/Wasps

Bee Lands – Blow Off Gently

Several Attack – Run Away

Bees - More Active In Spring

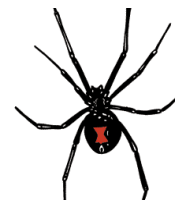
Avoid flowering plants, strong scents, & bananas

Wear light-colored clothing
Sweat angers bees

Wasps/Yellow Jackets/Hornets - Active In Autumn



SPIDERS



Black Widow

- Red Hourglass Mark
- Soft Bite
- Immediate Medical Attention



Brown Recluse

- Violin Shaped Mark
- Six Pair of Eyes
- Soft Bite → Immense Pain
- Immediate Medical Attention

Thunderstorms/Lightning

Terminology

Thunderstorm Watch - Possible.
Thunderstorm Warning - Occurring.

“Flash-To-Bang” Method

Seconds between lightning & thunder
÷ 5.1 = Miles from lightning



30/30 Rule: (Safe To Come Out?)

Thunder - 30 seconds or more
Lightning - 30 minutes after last strike